



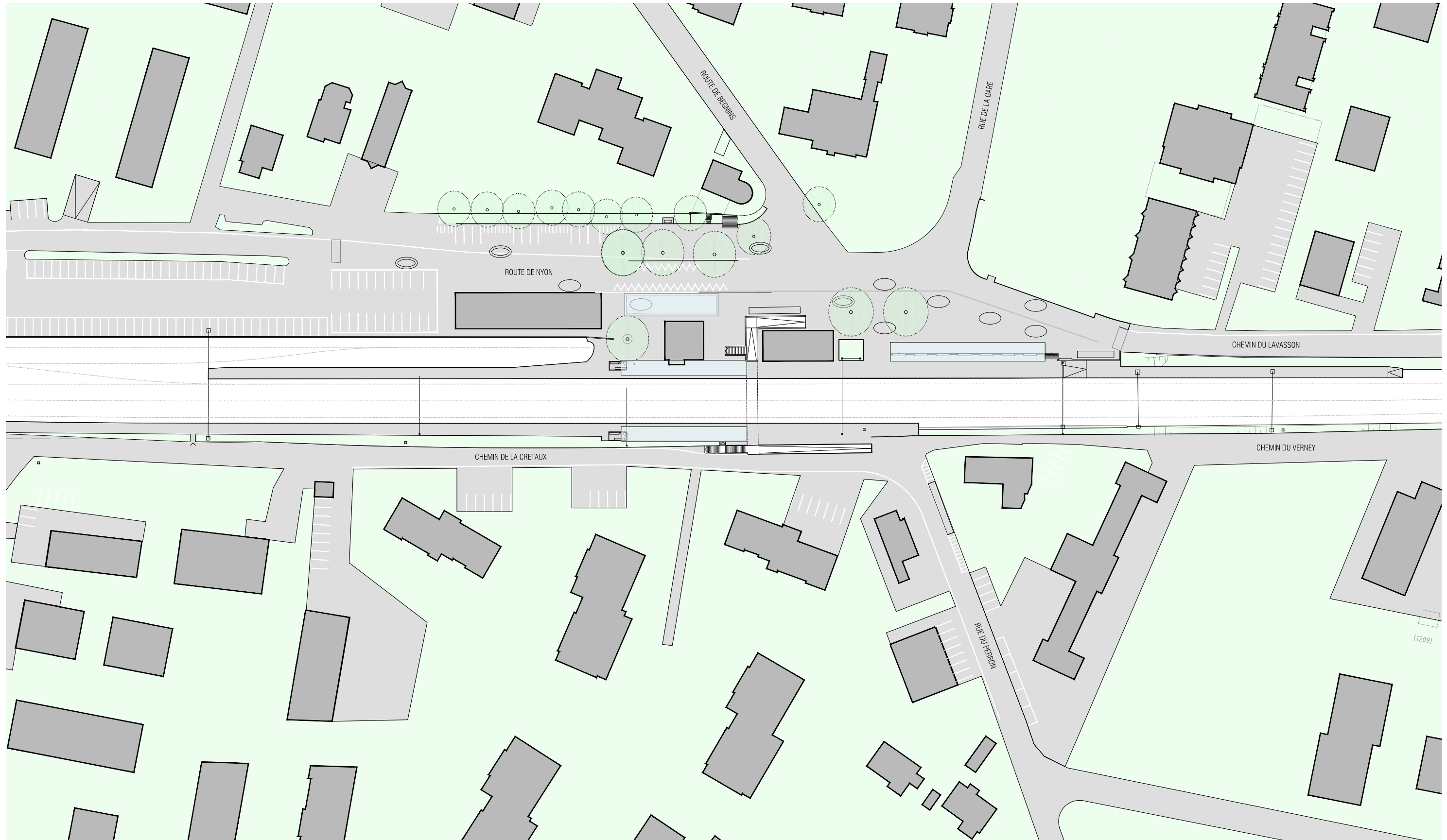
## Etat existant

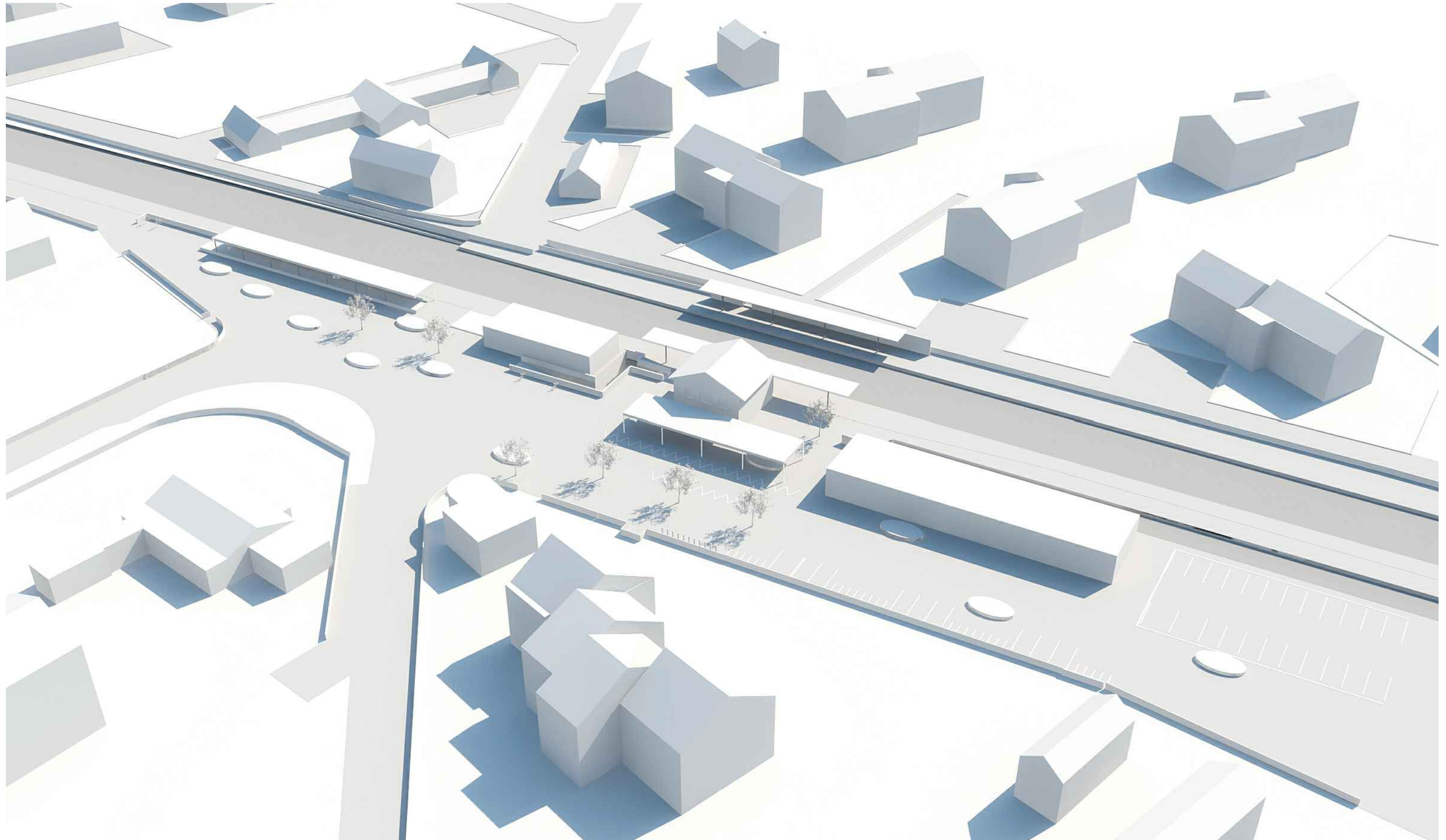
Vue aérienne 1:1000	02
Plan situation 1:1000	03
Axonometrie	04

## Projet

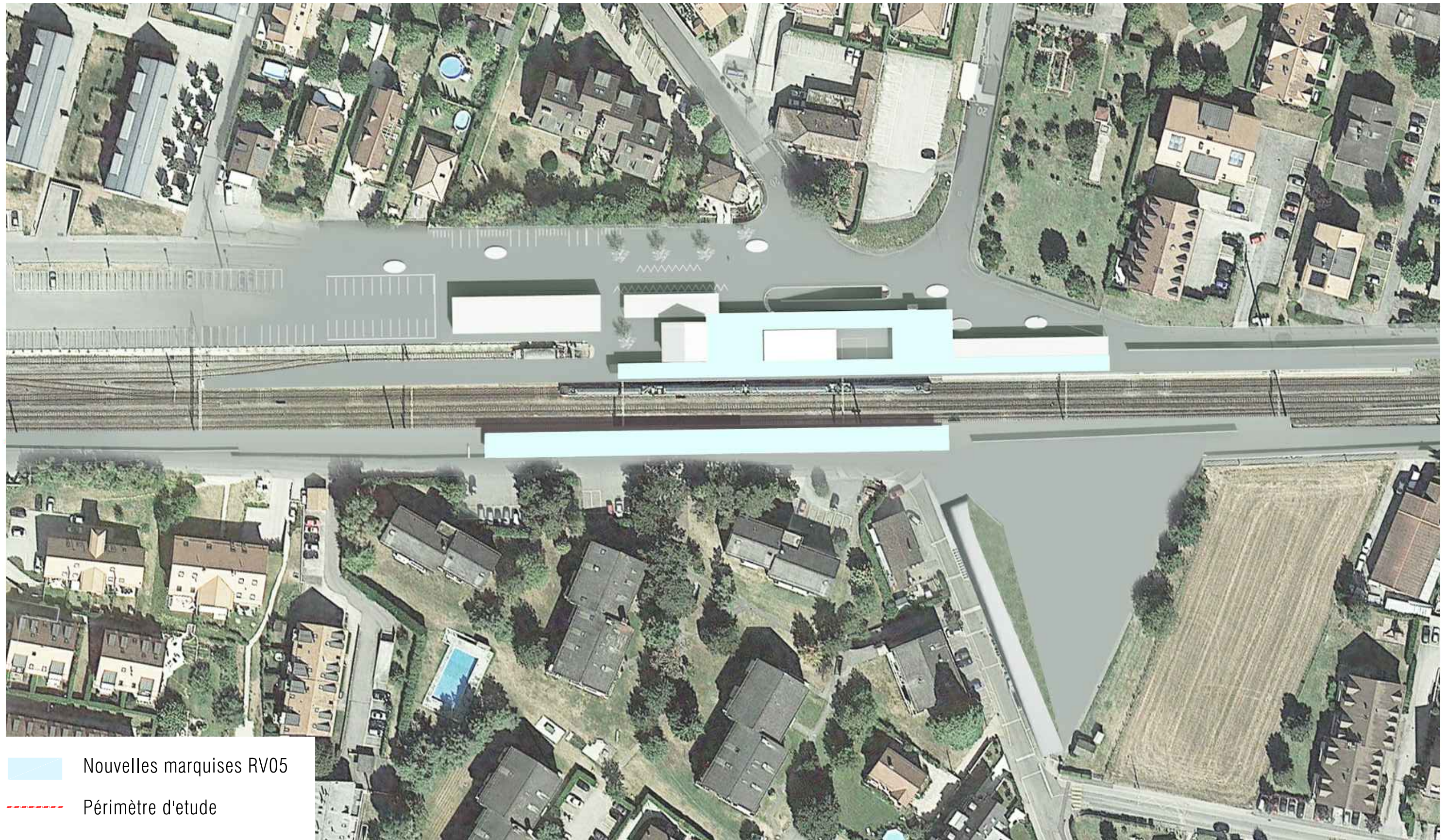
Objectifs	05
Vue aérienne 1:1000	06
Plan situation 1:1000	07
Coupes longitudinales 1:1000	08
Plan niveau quais 1:500	09
Plan niveau PI 1:500	10
Coupes longitudinales 1:500	11
Coupes transversales 1 1:200	12
Coupes transversales 2 1:200	13
Coupes transversales 3 1:200	14
Coupes rampes d'accès au quai 1 1:200	15
Axonometrie	16
Vue depuis le Chemin du Lavasson	17
Vue depuis l'abri bus	18



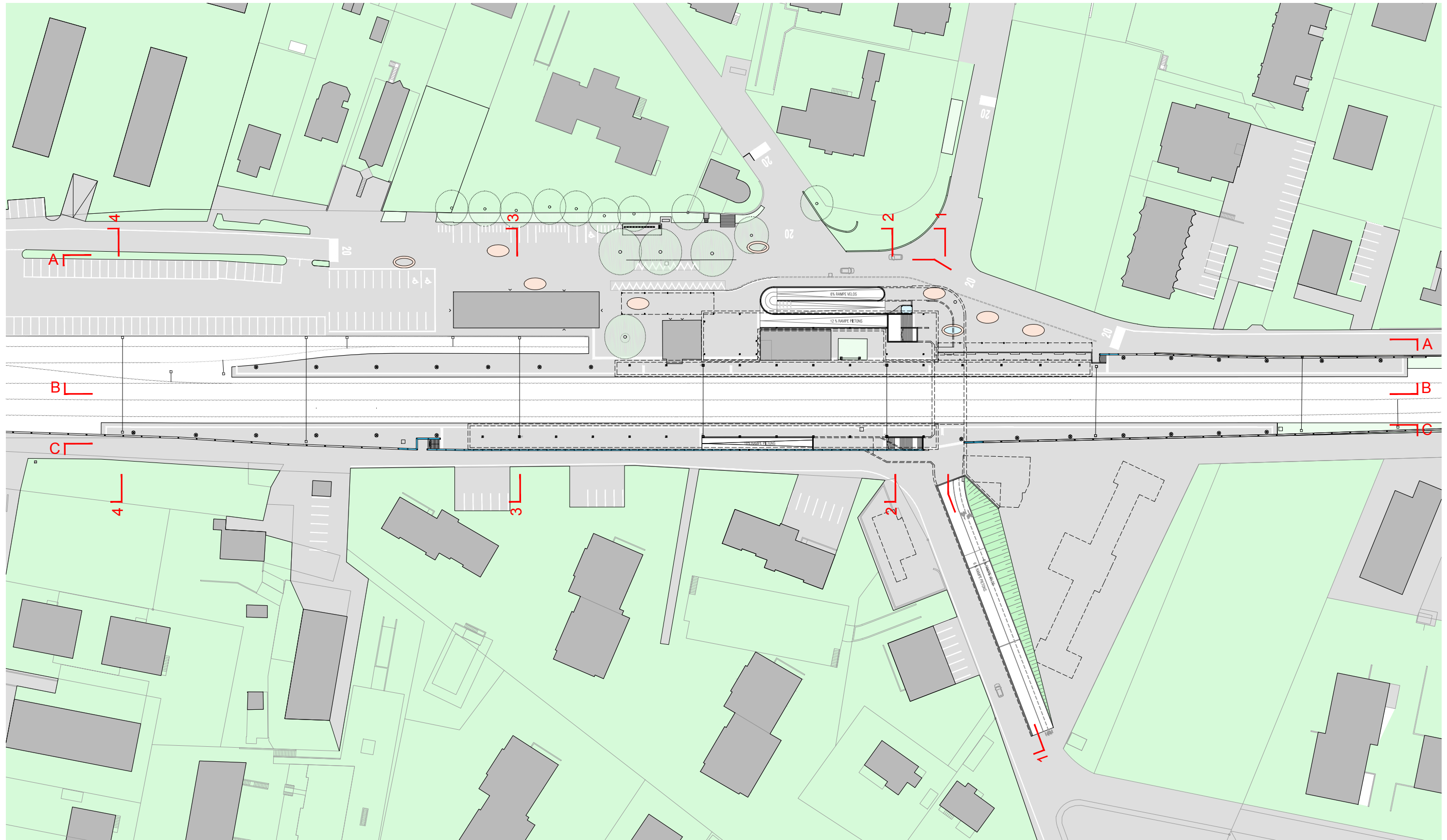




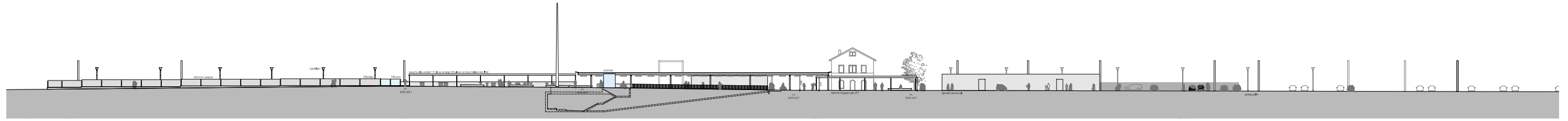
- Prolongement quais à 320 m
- Prolongement des marquises couvrant les quais à 130 m (environ)
- Démolition du PI existant
- Création d'un nouveau PI
- Couverture des rampes et escaliers d'accès au PI
- Création des parois antibruit le long du chemin de la Cretaux, Chemin du Verney et Chemin du Lavasson



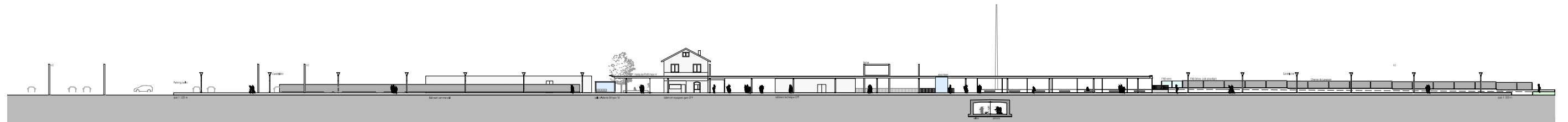
— Nouvelles marquises RV05  
- - - Périmètre d'étude



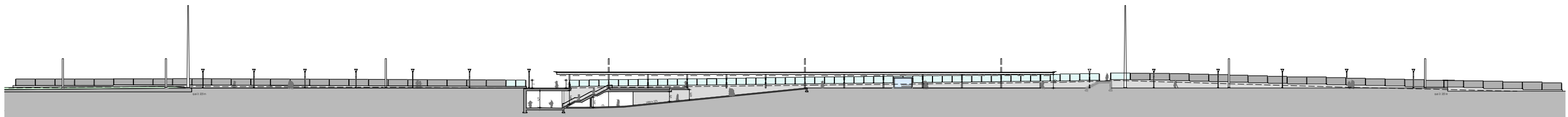







Coupe AA

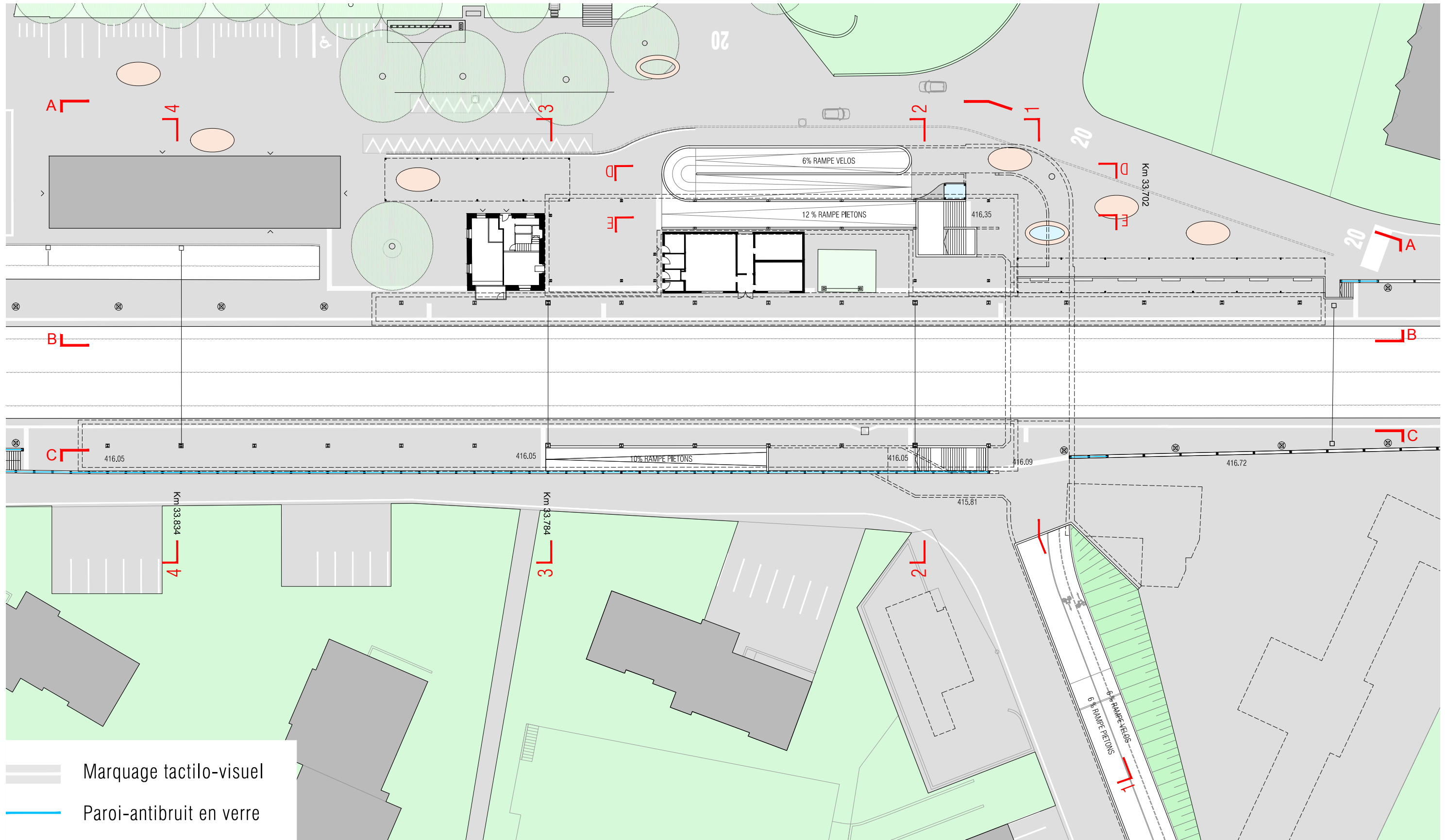


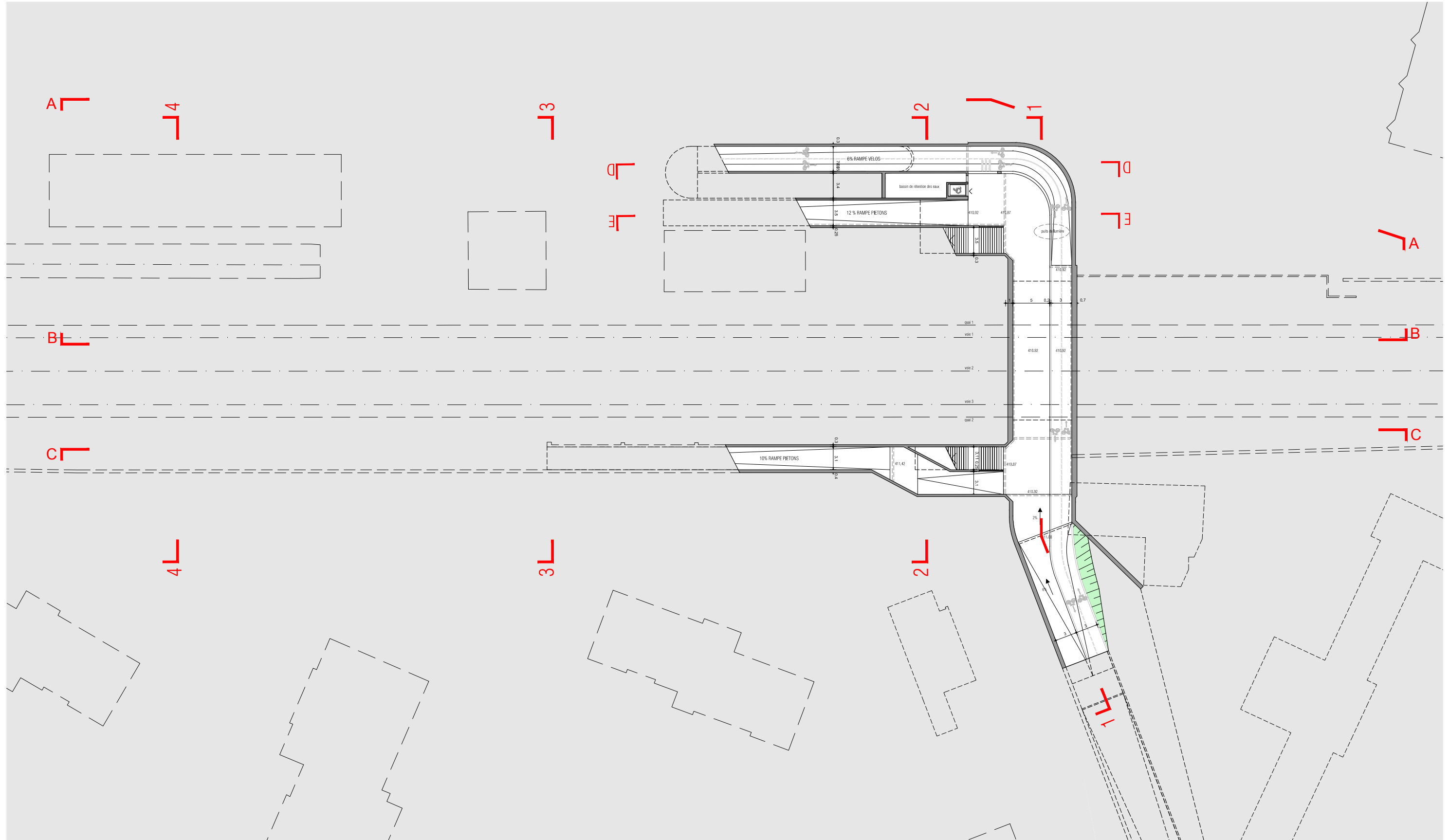
Coupe BB

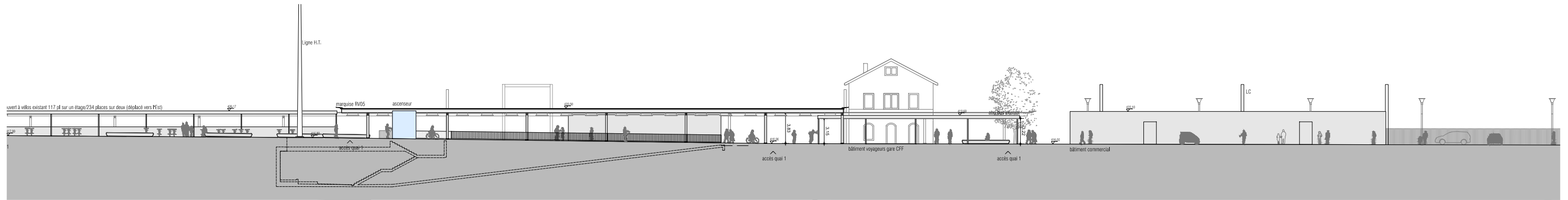


Coupe CC

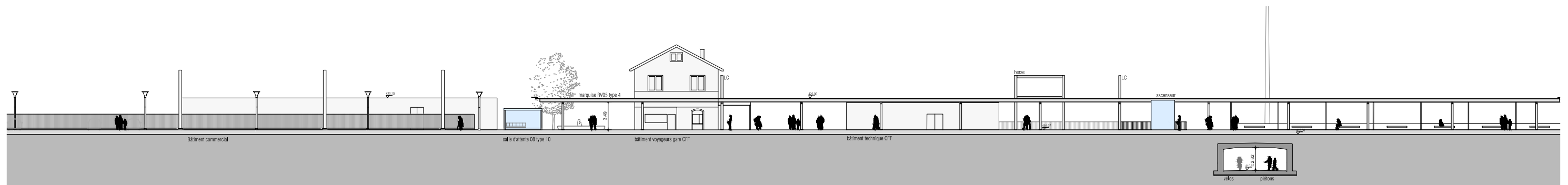
-  Ascenseur et abri en verre
-  Paroi-antibruit en verre
-  Paroi-antibruit en béton



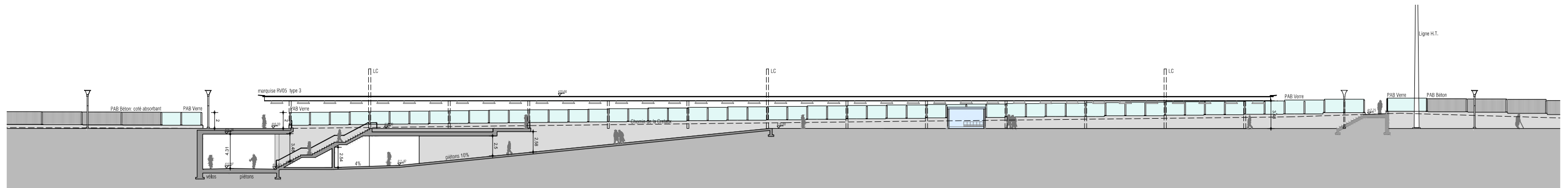







Coupe AA

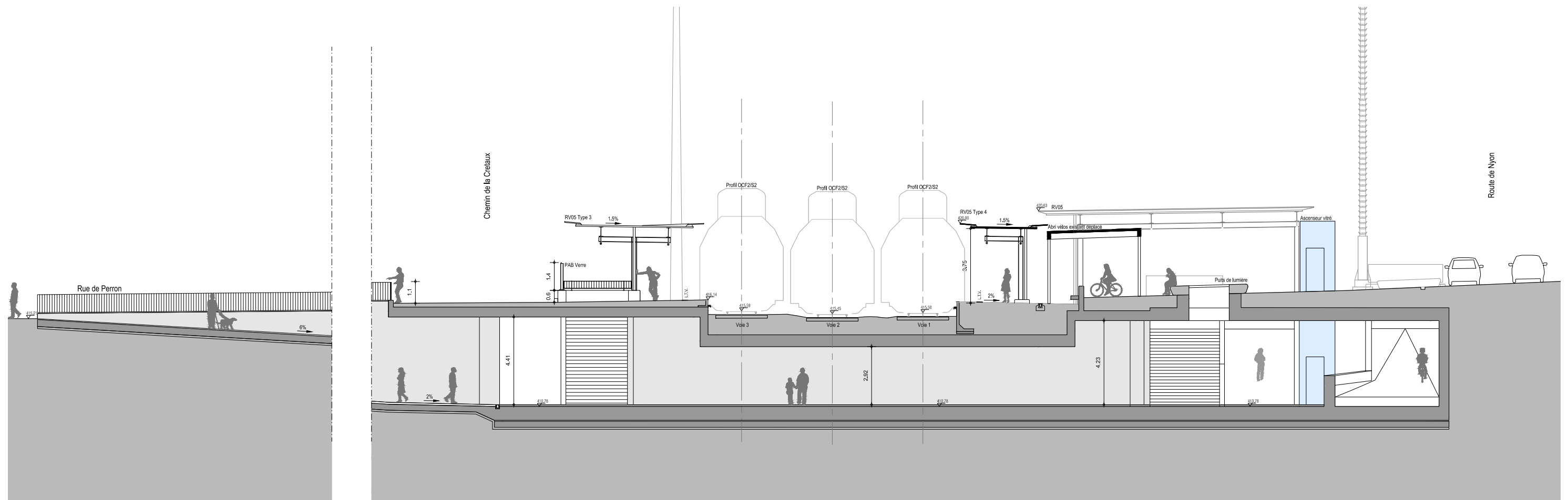


Coupe BB



Coupe CC

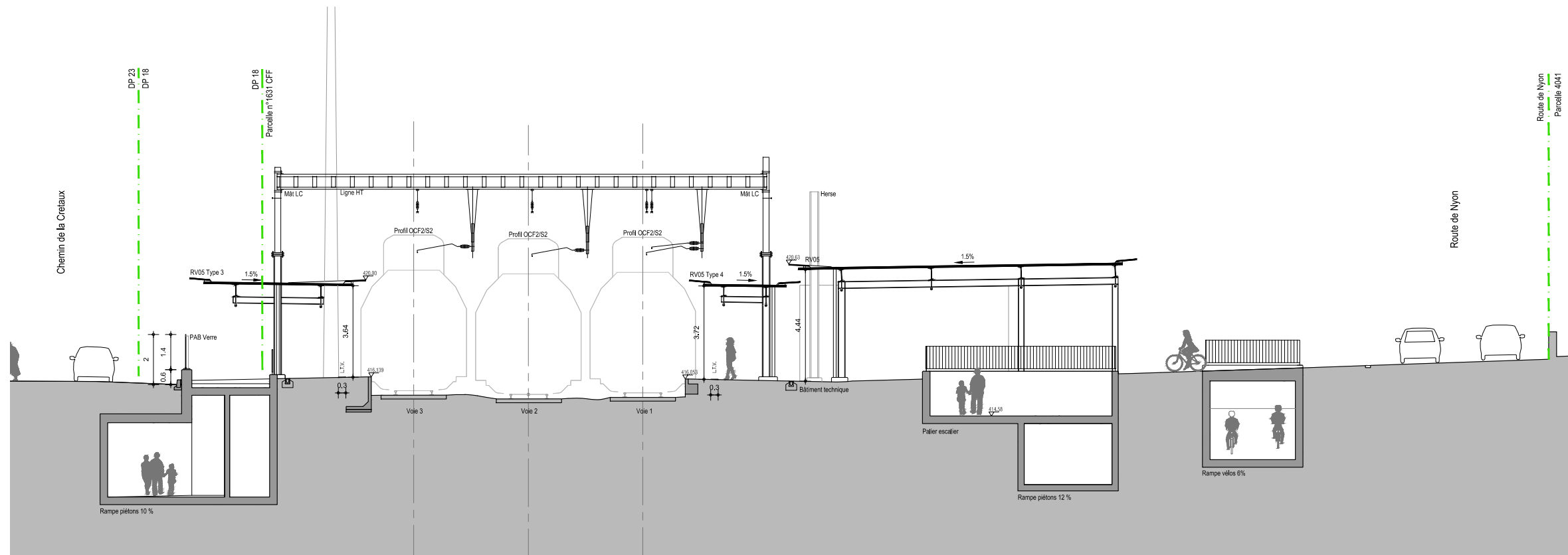
-  Ascenseur et abri en verre
-  Paroi-antibruit en verre
-  Paroi-antibruit en béton



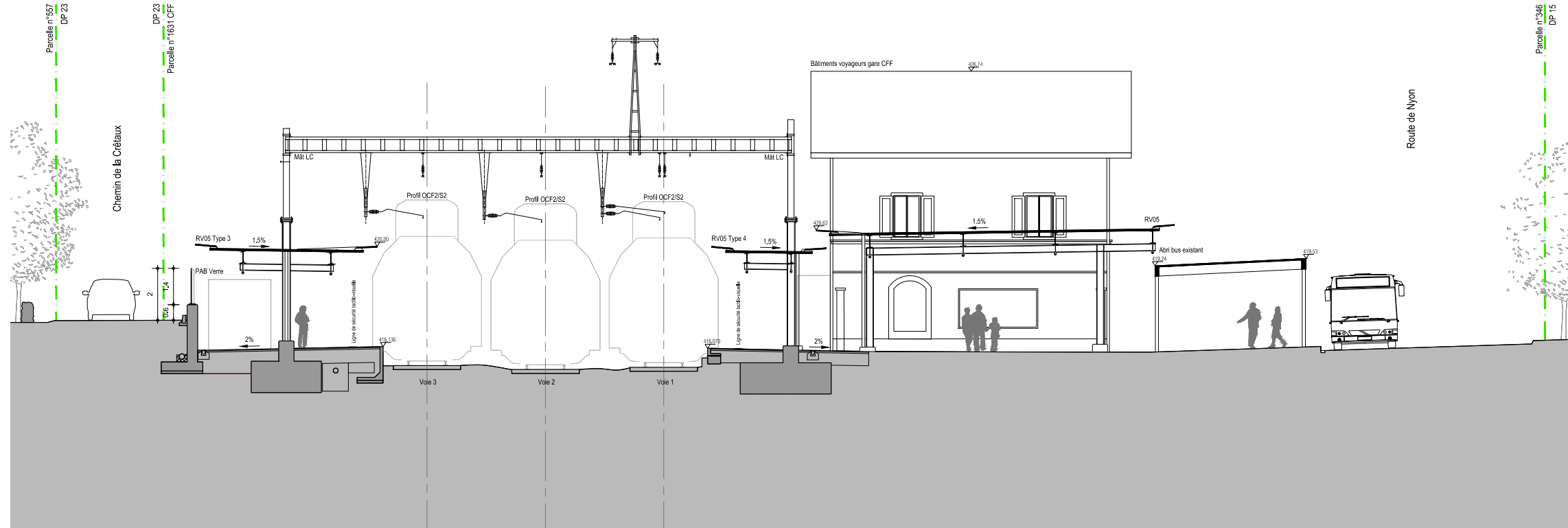
Coupe 1

# Projet

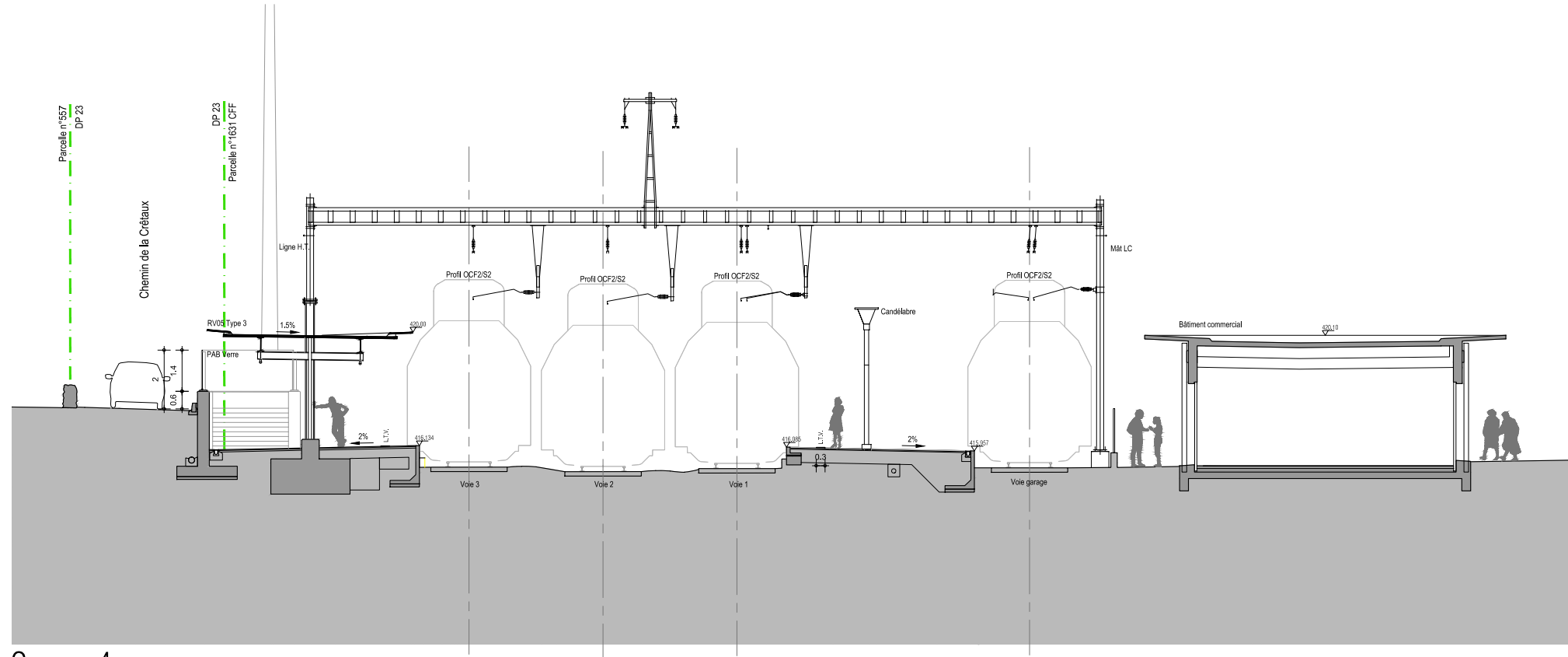
## Coupes transversales 1:200



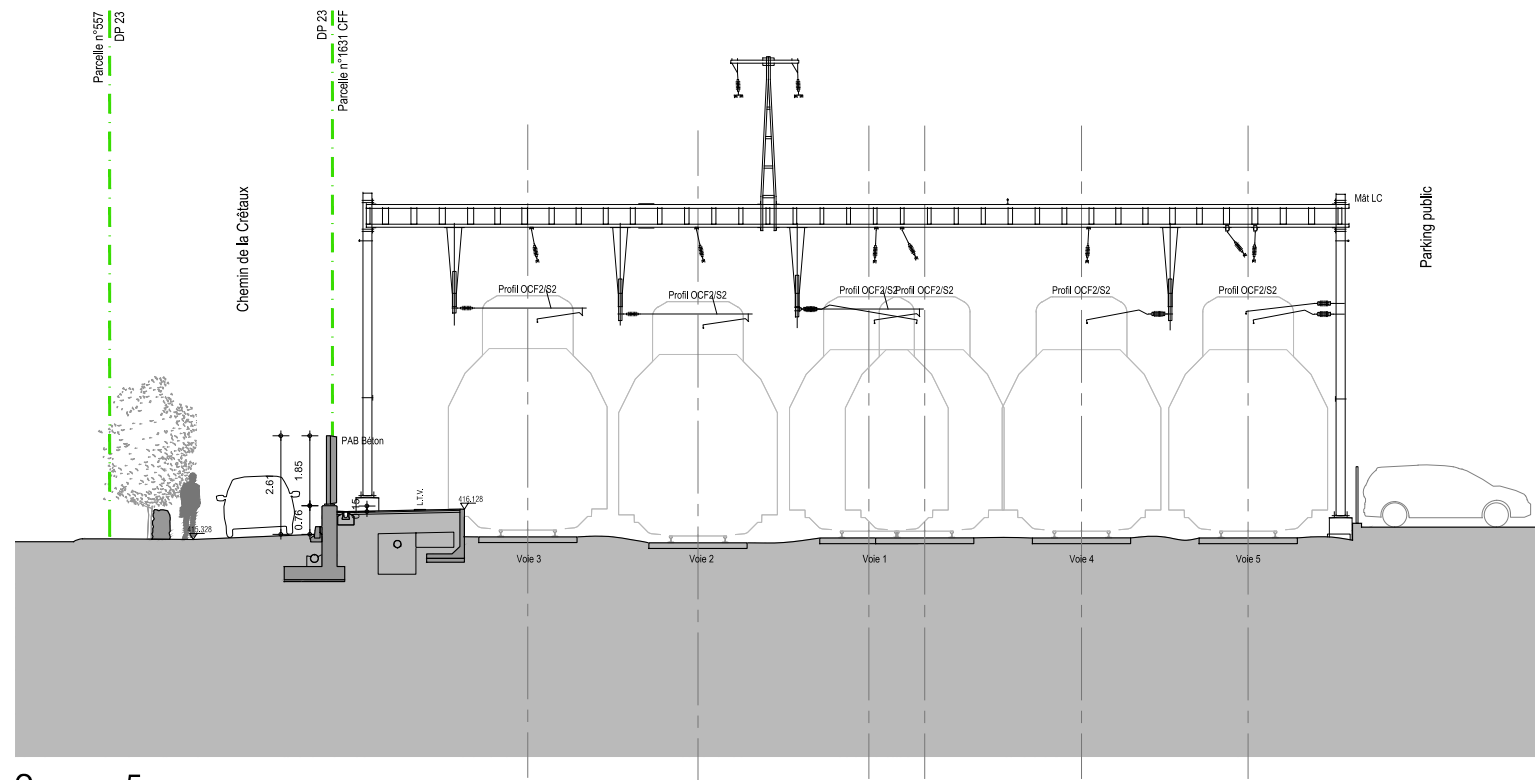
Coupe 2



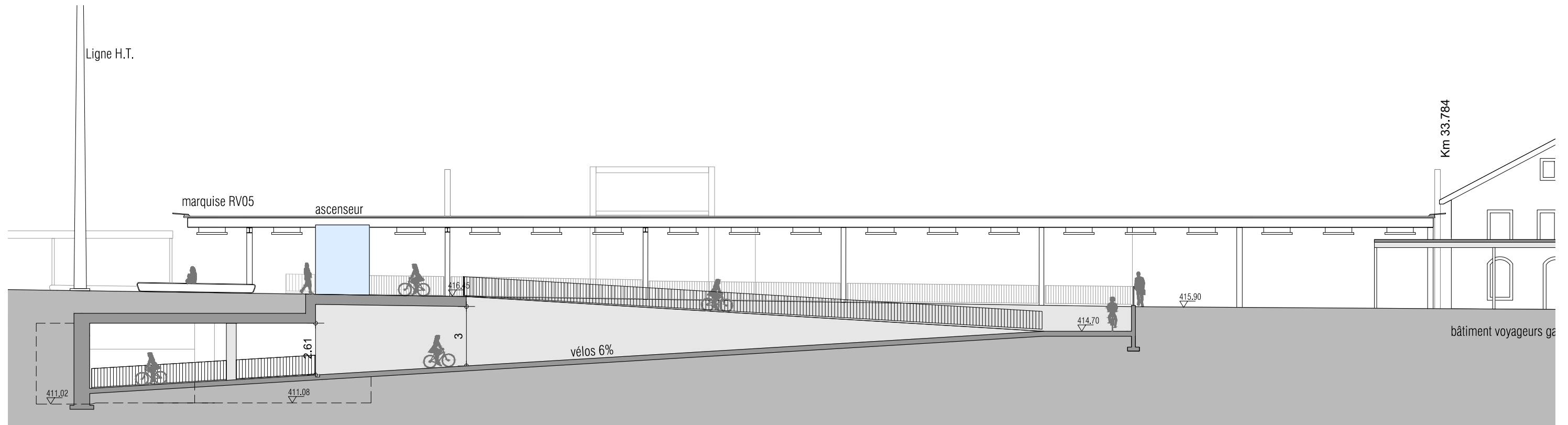
Coupe 3



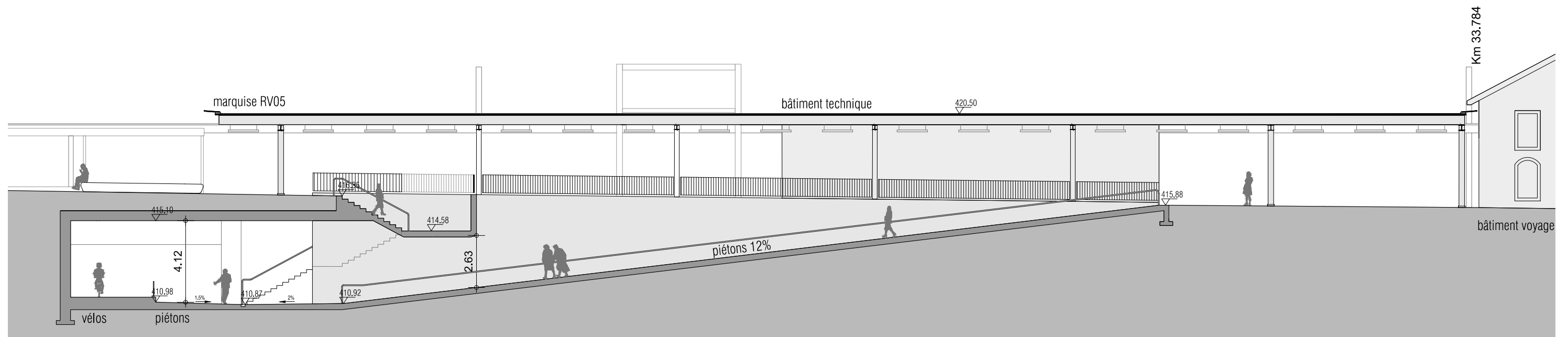
Coupe 4



Coupe 5



Coupe DD: rampe vélos nord



Coupe EE: rampe piétons nord



